

ROEHAMPTON GARDEN SOCIETY

FOUNDED 1873

MONTHLY BULLETIN

December 2016

www.roehamptonallotments.co.uk

The December Bulletin reports on the AGM that took place on Wednesday 23 November 2016 and celebrates the Show Awards presented by our President Justine Greening MP.



Raj Patel being presented with:

1. The Roehampton Estate Challenge Cup.
2. The Hugh & Lady Linstead Centenary Cup.
3. The Hugh & Marie Jenkins Trophy.
4. The Banksian Medal



Vivian Fowler presented with:

1. The Summer Cookery Cup.
2. Dr Miguel Lacroze Cup.
3. The Reverend PG Wallis Cup

More photos and details about the awards on pages 16/17 & 20/21. AGM reports pages 2-12. General news, recipe and bonfire p 12-15. Notices 17/18

Committee elected at 2016 AGM:

Jackie Savage - Chair & Website Editor
Carol Martinez - Vice Chair & Chair of Show Committee
Janis Humberstone - Treasurer
Alison Linton - Minutes & Membership Secretary
Georgina O'Reilly - Site 2 Allotments Secretary
Helen Finch - Site 3 Allotments Secretary
Gill Tamsett - Trading Secretary
Pat Dark - Bulletin Editor
Liz Crominska - Store
Greg Wilcox - Store
Mariangela Renshaw - Shows
Mike Cooper - Site Security
Brad Sanderson
Shirley Gillbe (Site Manager for Enable (WBC) (non-voting position)



Sheila Konig with Justine Greening. Sheila has stepped down from the committee after at least 20 years service.

CHAIR'S REPORT



My thanks go to the terrific committee and, those other volunteers, who spend a lot of their own time managing our lovely allotments and creating the great community spirit that we have.

SECURITY – Bad news first!

We have had a few security problems this year, particularly, on site 3. Several complaints about loss of property in May and then, in the summer, there were complaints that fruit was stolen from plots. We investigated this and one committee member spoke to a stranger/trespasser but despite all efforts no culprits were found. I informed the police who told me to put up notices to say that thieves will be prosecuted etc but that was all....

Then at the Site Managers' meeting run by Enable (Wandsworth) last week, which is where we meet and discuss all things allotment with the 8 other allotment sites in this borough, we were told that, 2 other sites (King George's Park and Morden) – both large sites had experienced the same problem. Thefts of fruit.

Reports (just like we had) of whole trees being stripped of their fruits in one go. Only fruit, not vegetables! nothing on the ground, all apparently carefully planned. I am convinced the thieves are outsiders and the gates and fences do not deter them. The other week we found a fence panel, which had been carefully removed, to allow access straight through to Dover House Road. We lifted it back in! I would like to hear any ideas about how these thefts might be stopped next year. The Meeting last week talked of scarecrows, CCTV cameras (real and fake) and large notices.

Despite my belief that if you are determined to break into one of our sites you can quite easily, I am concerned that there are still a number of gates that open onto the allotment sites where the resident is not a plot holder. 23 on site 3 and 2 on site 2. We are working out ways of blocking the gates off without damaging the residents' properties. I would appreciate any ideas about that.

Our new gate locks seem to have settled now – I hope I am not speaking too soon! We have taken out a maintenance contract for £358 per year and this includes 2 maintenance visits for each of the 4 locks and 2 call outs if needed. (A call out is £95). The maintenance visits are in November and May and we are giving it a year's trial. In April we increased the deposit on a key from £10 to £20. This is because when plot holders leave

they often don't bother to return the key. £10 isn't much these days apparently, but perhaps £20 will be!

RENTS

In March we were able to send out most of the rental invoices by email (80% of our plot holders now have email addresses.) Most people paid by direct bank transfer. However we will still offer the option of payment by cheque or by cash in person at the store in April.

SERVICES

We are fortunate to have regular deliveries of manure (thanks to Derrick Ratcliffe) and wood chippings on our sites.

The grass on the main paths is mown regularly too and we purchased a strimmer (and 2 batteries, each lasting about 20 mins) that can be borrowed by arrangement from the store, to make it easier for you to maintain the paths next to your plots.

Rubbish collection: This has been offered to us again this year by Enable (WBC) and will take place week beginning 5 December. It is for allotment rubbish only and please bag it! Remember that at all other times you are responsible for the disposal of your own rubbish and don't just leave it so that one of the committee has to take it to the tip!

STRUCTURES

The committee has worked hard this year on a Structures Policy that is practical. We can now accept a structure up to 2.3m (7.5') in height (instead of the old 1.9m/ 6'). This might not seem much, but it is hard to find a poly tunnel (for example)

that is 1.9m high. Hope this makes things easier for you! But remember, you must ask your site secretary for permission for any new structures (or trees!) before you buy!

NATIONAL ALLOTMENT SOCIETY

We joined the National Allotment Society in May. We had been advised this might be a good move as they might help in us in our transition to a charity. Also, they offer horticultural advice, various discounts and a magazine and emailed newsletter three times a year. The cost is £2.75 per member but as we have 400 members it would have been over £1000, so we negotiated a deal for 229 people who are actually plot holders, so it cost about £600. Let's see how it goes for a year.

WEBSITE

We have a good website but it is about 10 years old and needs an update, particularly as we had to rescue it in the summer as the website hosts were threatening to close it. So a member stepped up and sorted that out temporarily and now another member has agreed to design us a new one in the New Year – so watch the space! It is a great tool for us as it advertises what we do and is a good resource with dates for your diary, advice sheets as well as all the minutes of the committee meetings etc.

EVENTS

The main events in our year are our 2 Shows in June and September. Once again organised by Carol Martinez and judged by George Scandrett and a local cookery writer, Helen Sabieri. Our high standards were confirmed again as Raj Patel (one of our main exhibitors) also exhibited at the main Royal Horticultural Shows achieving 2 Firsts in their Later Fruit and Vegetable Competition in the first weekend in November (see P.17 for more details. When most of us have cleared our plots of crops Raj still keeps them coming!

We had 2 good Bonfires this year on 5th November and a well-attended party with refreshments and fireworks on site 3 (photos P 15). Thanks again to Sheila Konig and Bob Aveling. There were about 40 people on site 2 and 70 on site 3 so I hope everyone had a good time! This year we notified all the neighbours that had given us their emails and all went well with no calls to the Fire Brigade!

In March Paul Ellis-Howe came and gave a talk on what he looks for in a good allotment plot when he judges the Best Plot Competition. This event was held in the store and was very well attended. Even if we might not have agreed with everything he said, it was still food for thought.

In July some of the committee went on a visit to Kings Seeds near Colchester, organised by Pat Dark, who also arranged for a group of members to go to Wisley in the summer.

Other events included a Friday Late event at the V&A in August

where information about our Society was available. This will be repeated next year and we will circulate the details to you, as you might like to go along. I believe there were horticultural talks and a seed swap. Is Avril Horsford here?

In June we welcomed some members of the Wandsworth Horticultural Society (mainly plot holders on other Wandsworth allotment sites) and they have invited us to see their sites next year. We also now receive their quarterly Newsletter and pass on any tips and dates to you through the Bulletin.

We received lots of leaflets and advice from the Hedgehog Preservation Society. We have distributed those and hope that we can encourage hedgehogs back to our allotments along with other wild life.

Between Christmas and New Year one of our plot holders will be pruning that large apple tree on site 3. When I have a date I will let you all know as he will need some help and will be offering advice on pruning and will come and have a look at any apple or pear trees for you. (Not stone fruit as that is pruned in the summer.).

If you would like to volunteer for something for just a few hours you would be so welcome! Please talk to a committee member soon about what you can offer.

Jackie Savage, Chair

And now Anthony Fitzsimmons will update you on progress regarding

renewal of our Lease and
Becoming a Charity

UPDATE ON BECOMING A CHARITY

This is a slow process and there
are two parts to the process

- i. Setting up the Charity
- ii. Persuading the Charity
Commission to grant us Charity
status.

Lease

Wandsworth Borough Council
(WBC) has to be persuaded to “let
go” ie grant us a lease. This is
fraught with difficulty as the 5 acres
of allotment land is very valuable.
Slow steady progress has been
made and we are just about ready
to agree the lease (draft number 8).
We hope it will be for 50 years.
Barnet took 7 years to acquire a 38
year lease, we are on year 3!

Rent

Once the lease is in place WBC will
start to discuss the annual rent and
we hope it will be peppercorn!

Constitution

This has been agreed by the
Charities Commission and WBC
have had a huge input.

We are very grateful to Justine
Greening MP who has helped us
move forward, and also to
Councillor Ian Lewer.

Anthony Fitzsimmons

TREASURER'S REPORT



In anticipation of becoming a
charity, the format of the accounts
has been tweaked slightly, so that
they are in a form which would be
acceptable to the Charities
Commission.

A full balance sheet has been
added. This sets out the assets of
the Society and who is entitled to
those assets, as although there
may be money in the bank
accounts, that is not all available
for the Society to spend.

Creditors are now recorded where
services relating to one year have
not been paid for before the end of
that year.

Debtors are also now recorded e.g.
a refund of VAT is due to be repaid
to the Society, together with an
overpayment of water rates.

A figure now appears on the
balance sheet, which reflects the
total amount currently being held
for Key Deposits – these deposits
are ultimately refundable to plot
holders when they return their
keys.

Equipment being held at the end of
last year showed a value of £900 –
that has been written off as the
equipment now has no value.

Further equipment was purchased
during the year and depreciated by
50% so that the value of equipment
shown on the balance sheet is now
worth half what was paid for it, but
an estimate of its second hand
value. That value will be further
depreciated next year, so that the
cost will have been written off over
2 years. Having said that we are
hiring out the strimmer to plot
holders, so that will contribute

towards the cost of that particular item.

Stock in hand at the end of the year has also been adjusted.

There has been a decrease in the profits made by the Store during the year. This has been caused by lower sales during the year, together with an adjustment to the values of opening stock that also impacted on the profit for the year. Gill will be talking about this further.

The profits from the shows this year also showed a slight decrease, although that may, in some way, have been the result of the weather that was not brilliant on the day of the September show.

Having said all that, the Society has a healthy bank balance and its retained income account has increased overall by £560.

Janis Humberstone, Treasurer

TRADING SECRETARY'S REPORT



The Store on Site 2 is run for the benefit of the Members and offers quality gardening products at competitive prices.

We also aim to run the Store in an ethical and environmentally responsible manner. It is for this

reason that we took the decision to discontinue to stock products containing glyphosate, earlier this year, after its licence came up for renewal by the EU. The World Health Organisation had advised that it was 'probably carcinogenic to humans'. Also, research has shown that it is harmful to bees. Several European countries have banned its use. Alternative products have been researched to sell in the Store but so far none have had good reviews. The search continues.

We have been able to keep the Store almost fully stocked in the course of this year. The new large shed on Site 3 means that we can now have a delivery of larger quantities of County Natural. However, Loach, our main supplier, changed their pricing structure earlier this year which means that we have to wait until we need to order goods to a value more than £300, otherwise prices increase significantly (by c 20%). Thus we have to wait until we have an order of this value or higher before we can reorder. This means that we may run out of products although we have been able to keep this to a minimum.

We have not reviewed our prices for some time and now feel it is time to do this especially following the changes that Loach made to their pricing policy. We have already had to increase the price of Enviromesh, which now costs us more to buy. Our prices should be competitive but also realistic. This will be done in the next couple of months.

I would like to take this opportunity to thank those who assist in the

running of the Store. It is a group effort with Carol Martinez responsible for sourcing the garlic, onions and potatoes, and Liz Chrominska the seed packets. My thanks also to Greg Willcox, who is a great help with the deliveries and is responsible for sourcing and erecting our new shed on Site 3.

We have had fewer Members visiting the Store this year and, as a consequence, sales have been lower this year than in previous years. Country Natural and the garlic, onions and potatoes continue to sell well, but other sales are down.

We would like to hear your ideas as to why this may be or what changes we could make. For instance, should the Store open an hour later on Sunday's, for instance, between 11am and 1 pm? (There always seems to be a rush at 11.55am!) Are we stocking the right products? Is there anything we are not stocking that we should?

We would be grateful to hear your views.

Gill Tamsett, Trading Secretary

SHOW SECRETARY'S REPORT



Every show is different, depending on the weather on the day and what it has been up to in the preceding weeks.

The June show followed a cold wet spring and apart from rhubarb all the exhibits were on the small side. We were lucky to see a few miniature courgettes when normally we would have a table collapsing under their weight. Strawberries were sparse as well.

The September show was 'the bean show', with new and unusual varieties amongst the standard runners and French. The dahlias were stunning but the roses were a wash out and it was a real shame that the oversized vegetables exhibits were non-existent as they are always a talking point.

George Scandrett did a great job of judging again - his eye for detail is very sharp. Thanks George.

Over the last couple of years the show committee has added some new items to spark up the cookery section. The cake made from a given recipe shows how many interpretations there can be from the same ingredients. The autumn cake made from a seasonal vegetable was popular and we saw beetroot, pumpkin and courgette transformed into something delicious to have with tea.

Our thanks to Helen Sabieri, local cookery writer for her advice and for judging the shows.

Thankfully, we see at least one new novice in every show – long may this continue. Some people have told me that the rules and guidelines look daunting and scary and they feel wary of entering. But we want those people to know that

we are not scary and we are very happy to help new and experienced growers show their produce at its best, we do have to have some rules though. We need new people to keep the competition keen and to make sure the winning cups are spread out amongst a wider group of growers.

The children's section always raises a smile and it wouldn't be the same show without this category but we are welcome to new ideas. What would your children like to make and show?

Our thanks to David Renshaw for his very professional conducting of the auctions at the end of the shows. These have become very popular and keep visitors at the show a bit longer; the only danger is the possibility of running out of cakes.

Thanks also to all the volunteers who give their time to help with setting up the stalls, pouring the tea and washing up the cups, for making cakes and donating to the tombola.

Thanks also to all the exhibitors for making the shows the enjoyable spectacle they always are.

Carol Martinez, Show Chair

SITE 2 SECRETARY'S REPORT



Lettings.

In the period November 2015 to November 2016 there have been 9 new plot lettings. Two of these plots were created from larger plots where the plot holder had requested to downsize their plot. Four of these plots became available following plot inspection letters regarding lack of cultivation. There have been no plot lettings to current plot holders waiting for more land. There are now a total of 87 plots on site 2.

Site management In the spring site security was breached when the householder removed the fence to the rear of Plot 30A. Following our complaint a replacement fence was soon erected.

Thefts

There have been no serious break-ins to the site this year although a few items have been reported missing.

Irrigation systems

Following the request to install irrigation systems from plot holders last year, three plot holders were invited to participate in a trial. Only one was able to undertake this and he will be reporting back with his findings at the next committee meeting and we shall report back to members via The Bulletin next year.

Plot inspections

Plot inspections this year have revealed a consistently good level of cultivation overall. Where problems arise we proceed along the Wandsworth guidelines to alert plot holders of our concerns and agree a timetable for improvement.

Paths between plots were noticeably overgrown during early summer so a strimmer was

purchased for plot holders to borrow for £2.00 a session. Subsequently a second battery was purchased to allow for a longer strimming time.

I would like to thank the two plot holders who have responded to concerns about invasive bamboo by removing it. This is an opportunity to remind plot holders that plants such as this are not suitable on an allotment and to consult their tenancy agreements or site secretaries before planting shrubs or trees.

Thanks

Finally, I'd like to extend thanks to the many plot-holders who give of their time freely in many ways. Thanks to Pip Mellotte who maintains the toilet to an impeccable standard and thanks to Alan Smart for managing the bonfire again. I would also like to thank the many plot-holders who communicate with me on issues as they arise so that the site can be managed as effectively as possible and continues to be a welcoming place to come. Thank you all for your ongoing support.

Georgina O'Reilly, Secretary, Site 2

SITE 3 SECRETARY'S REPORT



This has been my third year as site secretary. It is a role I have continued to enjoy and feel more and more part of the growing allotment community that is Site 3.

Lettings: 4 plots have been split generating 4 more plots so we now have 163 plots altogether on site 3. Over the year, since the last AGM, there have been a total of 22 lettings (14% of 163 plots), 19 to new tenants and 3 to existing plot holders. 8 of these plots became available after the incumbent tenant had been encouraged to give up their plot due to poor cultivation.

Security on Site 3: One of the problems on site 3 is that there are 32 gates from gardens, which border the site, which give access to the allotments. Two thirds of these (21) are where the residents are not plot holders.

Improvements and repairs:

Both gates have been painted on the outside. The shed housing a store of Country Natural has been replaced as the other one was demolished in a storm last winter.

We had a very significant flood at the water tap near plot 92B. Thames water had to be called in to deal with it, as this particular tap has its supply common to several neighbouring houses in Huntingfield Road. This fact was not previously known so it took a while to track down the water supply. In order to fix the leak the water had to be turned off, which meant the householders had to be given several days' official warning by Thames Water. The plots east of the tap were irrigated for about 2

weeks in all before the leak was finally fixed.

Plot inspections took place in November, March and July. I have needed to contact an average of 16 plot holders (about 10%), as their plots needed some attention. During May and June there were a number of plots that were getting horribly out of control so interim, targeted inspections were done and 8 plot holders were contacted and 3 gave up their plots as a result.

Thanks: There are a lot of plot holders who generously give their time and talents to help site 3 work. Without a spirit of volunteering site 3 would be a very sorry place so many thanks to all of you who have helped with repairs, keeping the toilet clean, generally keeping the common areas tidy, putting up sheds, giving advice and encouragement to new plot holders, helping others who might not be well. Also, thanks to those for doing bits of plumbing, those who turn water on and off and those who run the bonfire party.

Waiting list:

There are currently 225 people on the waiting list (10 more than a year ago), of whom 29 are existing plot holders (2 more than last year). Those at the top put their names down in April 2014 so it is still taking about 2 ½ years for new potential tenants to get a plot. There have been 65 names added to the list since the last AGM, (101 at the same time last year) of which 9 are existing plot holders (7 last year). The fewer potential new plot-holders may be a reflection of a reducing popularity of having an

allotment or people not knowing about us or feeling it is an impossible aspiration to have a plot in London or a changing demographic in the area or people retiring later. Other ideas are welcomed, as perhaps we should think about addressing some of these possible reasons.

Helen Finch, Secretary Site 3

BULLETIN EDITOR'S REPORT



The in-house printing service at WBC 'Quickprint', ceased to function this year. WBC put printing services out to tender but administer the system, this is still the cheapest option for RGS but Inevitably, costs have risen.

Ten Bulletins have been published since the 2015 AGM.

The December 2015 Bulletin reported on the AGM. The cover photograph showed six members of the committee and listed the committee elected. Each committee report started with a photo so plot-holders and members can recognise committee members and be aware of their responsibilities. The Show Awards were celebrated with photos of prize-winners being presented with their cups.

Nine Bulletins have been published during 2016. There are no Bulletins in January or August. In each Bulletin the Chair reports on key issues affecting the sites, such as advance warning of rents; plot inspections; security etc., and the Trading Secretary reports on stock at the store, new lines, and gives advice on what to grow at different times of the year.

June and July Bulletins advertise and report on the Summer Show and the September and October Bulletin on the Autumn Show. The July and October Bulletins take the opportunity to celebrate the entries that make the Shows such popular events in our calendar with photos of the flowers, fruit and vegetables, the cake and tombola stalls and lists of first prize winners.

Each Bulletin features seasonal photos, usually taken on the allotments.

The monthly Bulletin welcomes new plot-holders and members; features a seasonal recipe; advertises events such as Bonfire Night or the annual visit to Wisley, items for sale and new services.

This year Sally Baker, a Barnes Brownie wrote about working for her gardening badge, which seemed like quite a tough badge to gain. There have been features on the Kew Annual Orchid Festival that takes place in February; the presentation by Paul Ellis-Howe, the judge of the Wandsworth best plot competition, on what he expects to find on a good plot; the proposal to make London a national park; and visits to the Kings Cross Skip Garden, Kings Seeds and the new Hive sculpture at Kew.

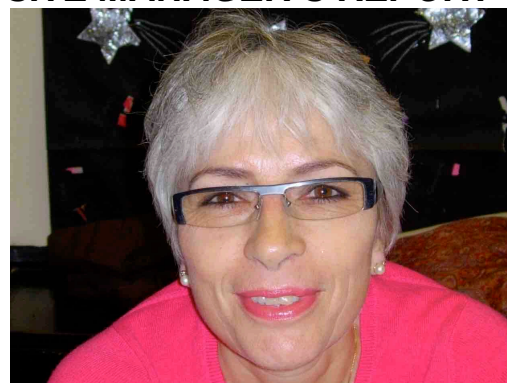
Gardening advice is also given, for example, how to plant your dahlias; being water wise and bees and allotments.

The Notices section at the end goes from strength to strength.

I want to thank all those people who contribute to the Bulletin. I am always very grateful to receive photos, recipes, articles, letters etc. so please keep them coming. My contact details are at the end of every Bulletin.

Pat Dark, Bulletin Editor

SITE MANAGER'S REPORT



Shirley Gillbe who is our ex-officio liaison with Enable reported: - It has been Enables first full year, we have had more meetings facilitating better communications between us. We are grateful for their co-operation.

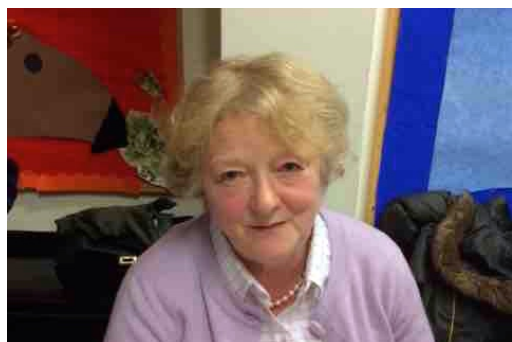
There have been thefts on our sites and Enable report that other sites in the Borough have had a similar problem and it has been suggested that it might be a co-ordinated effort by the thieves.

The "Best Plot Competition" continues to be unpopular and they are considering replacing it with an "Better Plots" event. There will also be an "Allotment Challenge" event

in January. Details to be circulated and posted on website.

Shirley Gillbe, Site Manager for Enable

MEMBERSHIP & MINUTES SECRETARY



Alison Linton



New committee member: Brad Sanderson

UNWANTED CHRISTMAS GIFTS!

Please bring along any adult or children's items you have, including unwanted Christmas gifts, to the store in January rather than give them to a charity shop.

There will be a box in the store from early January for you to place your donations. The show committee has decided to open up the tombola's at the shows to include donations that are not just bottles or jars – so anything considered unless it has a sell by date that is after June 2017.

**DIARY DATES FOR 2017
Summer Show June 24th,
Autumn Show Sept 9th
AGM Weds 15 Nov.**

INTRODUCTION TO GARDEN HISTORY

Lindley Maitland, one of our allotmenters is doing the above course. She says it is very interesting and fun and encourages others to consider taking it.

The 6-week course is at the Institute of Historical Research, University of London. Garden history encapsulates a fascinating amalgam of art, architectural, landscape, social, literary and horticultural history as well as archaeology and the evolution of garden design.

The Birkbeck Garden History Group (BGHG) wants to encourage the study of garden history by introducing the subject to people who have not been involved in it previously, although they may have an interest in one or more of the disciplines mentioned above.

The course takes place on Monday

mornings with 2 afternoon visits.
Tutors: Letta Jones MA & Stephen
Smith MA

Full details about this course and
others can be found at:

[https://www.eventbrite.co.uk/e/intro
duction-to-garden-history-course-1-
tickets-19986378797](https://www.eventbrite.co.uk/e/introduction-to-garden-history-course-1-tickets-19986378797)

WANDSWORTH PARKS NEWSLETTER

The newsletter is on their website
but there are two items I thought I
would draw your attention to.

WANDSWORTH'S ALLOTMENT CHALLENGE

Sunday afternoon, 22 January
2017, 2.30 to 5.30pm
Chatham Hall, off Northcote Road
SW11 (opposite Northcote
Library)

Once again we (WBC Enable) are
pleased to have an opportunity to
share allotment and food growing
experiences, swap growing tips,
seeds, etc, pick the brains and
experience of other allotment
holders and edible gardeners.

The afternoon is open to new and
experienced allotment holders and
anyone interested in edible
gardening. It will be a friendly,
informal session, so come with
your questions and be prepared
to provide answers or suggestions
as well.

To book your place please
contact the Parks Team on 020
8871 6441 or email them at
allotments@enablelc.org
VOLUNTEER'S REQUIRED

Looking for something more

involved than a walk in the park in
your spare time? We have three
volunteering roles, none of which
replace paid staff time.

1. Map archives volunteer

We have various rolled up plans
and maps of parks and an empty
plan chest. Mainly late 20th century
in date, the pile may also include
older plans and designs. We need
your help to catalogue and file
them.

2. Bird record scribe

To collate past records of bird
recordings on Tooting and
Wandsworth Commons. If
you passionate about bird life, with
a keen eye for detail and
are familiar with record keeping,
this could be perfect for you! For
current bird lists visit our website.

3. 'Green Flag Award' assessors

The Green Flag is the national
standard for public parks. We are
looking for volunteers who can
identify areas of improvement in
their local park as part of an initial
GFA assessment. In the longer
term this may assist in winning a
green flag for your local park.

There will be an evening meeting in
the Battersea Park Conference
Room to explain background and
way forward, refreshments
provided, open to all potential
volunteers and Friends. Date:
January 2017 (to be confirmed)

**For more information about any
of these volunteering
opportunities please contact the
Parks Team on 020 8871 6441 or
email them at
allotments@enablelc.org**

ROASTED APPLE & SQUASH SOUP

from Jamie Oliver (Jamie's Great Britain) (thanks to Gill Tramsett for recommending the recipe)

Ingredients

1 butternut squash
3 cox or braeburn apples
1 onion
4 garlic cloves
2 red chilies
Olive oil
A pinch of coriander seeds
A pinch of rosemary
3 heaping tablespoons pumpkin seeds
a pinch of sweet cayenne pepper
800 ml (27 ounces or a little less than a quart) vegetable or chicken stock
150 ml (5 ounces or about 1/2 a cup) single cream (half and half)

Directions:

Preheat the oven to 200° C (400 ° F)

Slice the squash lengthways and scoop out the seeds. Cut in to 25cm chunks and put them into your largest roasted tray.

Peel the apples, then quarter them and remove the core. Peel and roughly chop the onion and add the apples and onion to the roasting tray. Half the chilies and remove the seeds and add to the tray with the unpeeled and bashed garlic cloves.

Drizzle a good amount of olive oil over the whole tray, as well as salt and pepper. Add coriander and rosemary.

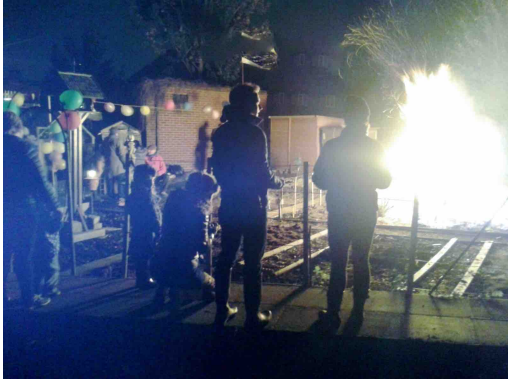
Toss everything together so it's all evenly coated with oil and seasoning. Cook for around 45 minutes, until everything is cooked through and intensely golden.

Toss the pumpkin seeds with salt, pepper, olive oil and cayenne. Spread on a baking tray and toast in the oven for 10 minutes until nicely toasted. Set aside. Put some of the roasted vegetables in a liquidizer (blender), making sure you squeeze the garlic out of its skin. Add a swig of stock, then place a tea towel over the lid and gently blitz (blend) until smooth and lovely. Put this into a large pan and repeat with the rest. Pour in most of the cream and bring to a simmer over a medium to low heat. Have a taste. Season to perfection.

To serve, divide between warm soup bowls and add a swirl of cream and a sprinkling of toasted seeds. Serve with warm crusty bread.

BONFIRE NIGHT ON SITE 3

A great time was had by all!
Enormous thanks to Bob Aveling
and Sheila Konig for organizing the
event.



**Presentation of Show
Award by President Justine
Greening MP**



David McDonald: The Davis Memorial Cup



Pat Davis being presented with:

1. The Lady Hudson Cup
2. The Jack Hawkins Challenge Cup



Elaine Barnwell: The Dr Howard Coulthard Cup



Ruth Barnwell: The Autumn Cookery Cup (Ladies Cup)



Carol Martinez: 1. The Lady Corrie Cup 2. The Hugh & Marie Jenkins Trophy 3. The Tommie Noon Cup



Georgina O'Reilly: The Reta Challenge Cup and also, with her husband John, The RGS Challenge/Paul Alderson Memorial Cup



Deborah Radford: The Percy Barnes Memorial Cup



Jackie Savage: The JHP Higgins Cup



Mariangela Renshaw: The Barbara Dacle Cup



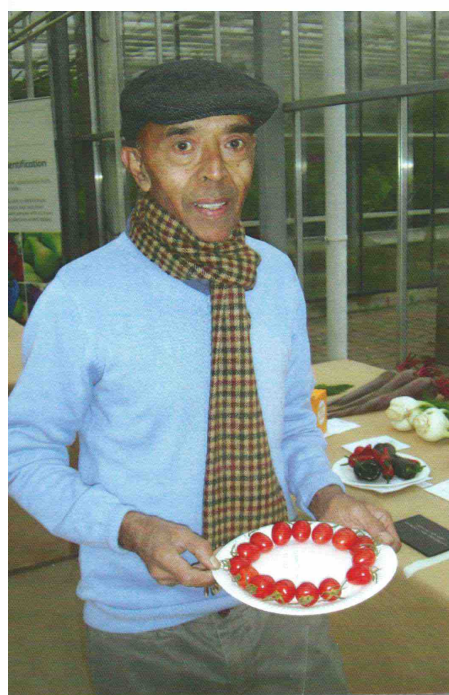
Brad Sanderson: The WTF Iles Memorial Cup



Sally Baker: The Rita Noon Cup

RAJ PATEL: WINS AT RHS LATE FRUIT & VEGETABLE COMPETITION 4-6/11/2016

Many congratulations to Raj for his success in winning first prizes for Cherry tomatoes and chocolate peppers, second prizes for fennel and chilli peppers and third for celeriac, at the Royal Horticultural Society late fruit & vegetable competition.



NOTICES

DATES FOR YOUR DIARY

Summer Show: 24 June 2017
Autumn Show: 9 September 2017
AGM: Wednesday 15 November 2017

RGS ADDRESS AND POST BOX

Fixed to the gate at site 2, The Pleasance. The address is:
Roehampton Garden Society The Pleasance Allotments The Pleasance
London SW15 5HF
Website:
www.roehamptonallotments.co.uk

RHS CONTACTS

Committee Chair: Jackie Savage,
Site 2 Allotment Secretary:
Georgina O'Reilly;
Site 3 Allotment Secretary: Helen Finch.
Site Manager: Shirley Gillbe;
Comments, questions for Chair and/or Committee via website:
root@roehamptonallotments.co.uk

BASIC RULES FOR THE PROMOTION OF SOCIAL COHESION ON OUR ALLOTMENT SITES

- Respect the rights and belongings of other plot holders.
- No dogs without leads.
- No unsupervised children.
- Lock the gate behind you.
- Dispose of your own rubbish.
- No structures to be erected or trees to be planted without permission of your Site Secretary.

If you think someone is breaking the rules contact a committee member or me, rather than confront another plot holder.
jackiesavage29@gmail.com or
07508 559134

THE CONSERVATION

FOUNDATION TOOL SHED Mend

and re-furbished old garden tools for schools
www.conservationfoundation.co.uk
www.vegetableseeds.com

DISCOUNTS

Adrian Hall, East Sheen

On presentation of your RGS membership card you will receive 10% discount on horticultural goods that you take away with you, not on delivered items.

Neal's, Heathfield Road, SW18 3HR (opposite Wandsworth Prison)

Register for their loyalty card, as an RGS member by showing your membership card, giving your name, email address, post-code. A 7% retrospective discount on goods purchased, which can be redeemed at the time of the next purchase (like a Nectar card). The amount of discount is recorded as 'points' on the card and shown on each till receipt. £5.00 worth of points is put on your card as a thank you when you register. If you are over 50, and a loyalty card member, you will receive 10% discount on Wednesdays.

THE CARTRIDGE PEOPLE,

Give 10% of the cost of your order back to the Society when you buy from:

www.cartridgepeople.com/RaisingMoneyFor/Roehampton-GS

AUSTIN MOWERS

Repairs and sells reconditioned mowers and sharpen shears. 300 Garratt Lane, SW18 4EH 020 8874 4206 www.austinmowers.com
austinmowers@aol.com

YOUR LOCAL LOCKSMITH
Professional & Reliable Service
Complete Security Specialists
Keys Cut

Lock & Safes Emergency
Locksmith Security Gates &
Grilles Alarms

391 Upper Richmond Road West,
East Sheen, SW14 7NX Tel: 0208
392 2233

SECURITY

If you see someone trespassing or
causing damage on the Sites, or in
an emergency phone 999 or text
phone 18000.

NEW DAWN GARDENS

Artan Deliallisi, one of our plot
holders, offers regular or casual
maintenance for gardens. He will
repair or build fences, gates,
sheds, paving, walls and arches.
07411 288485
artandeliallisi@gmail.com

MANTRA LANDSCAPES

Grounds maintenance specialists
www.mantralandscapes.com
Alexander Barrington Thompson-
Byer
Tel: +44 (0)7985 463 283

FREE HORSE MANURE

Ridgway Stables in Wimbledon
(next to Swan Pub on the corner of
Hillside and Ridgway) have a
constant supply of free horse
manure available.

The manure is bagged up and
gardeners are welcome to collect
between 8am -5pm, 7 days a week.
They will also deliver manure in
larger loads (approx 60 bags) to
allotments in the area, on
Saturdays.

Please call Julia on 020 8946 7400
if you are interested.

CAPITAL GROWTH

Capital Growth is the largest food
growing network in London. It was
set up initially as a partnership
initiative between London Food
Link, the Mayor of London, and the
Local Food Fund and helped create
2012 new community food-growing
spaces across London by the end
of 2012.

You may be interested in their
courses and voluntary work
opportunities. See what they are
doing and sign up for their
newsletter at
www.capitalgrowth.org

Volunteer gardeners needed

Volunteers are needed to help in
the large and beautiful gardens at
Mount Court which is a retirement
home in Weimar Road, Putney
SW15 1SJ. If you are interested
please phone Maggie on 07549
279 215.

THE STORE

Store open on Sunday mornings
between 10 -12.00 noon. Café,
also serving tea, coffee and
homemade cake.

NEXT BULLETIN:

The next Bulletin by
Sunday 5 February 2017
by email, in store and on both sites.
Copy for next edition to Pat Dark
(020 8789 7568, 27 St Margaret's
Crescent, Putney, London SW15
6HL or by email:
patdark13@yahoo.co.uk by 20
January 2017

Show Awards 2016

Special Awards for the Summer Show

The Roehampton Estate Challenge Cup (presented by Douglas Overall)

– The best vegetable in the summer show – **Raj Patel (Peas)**

The Hugh & Lady Linstead Centenary Cup – The most points for vegetables in the summer show – **Raj Patel**

The Davis Memorial Cup – The best exhibit for 1 vegetable/1 fruit/1 flower – **David McDonald**

The Lady Hudson Cup - The best rose in the summer show – **Pat Davis**

The Dr Howard Coulthard Cup - The best bowl of roses arranged for all round effect – **Elaine Barnwell**

The Lady Corry Cup - The best vase of multiflora roses – **Carol Martinez**

The A Norman Rogers Challenge Cup - The best vase of cut flowers, 3 or more kinds – **Pat Davis**

The Barbara Dacie Cup - The best flower display in a goblet – **Mariangela Renshaw**

The Summer Cookery Cup – The highest number of points in Section F – **Vivien Fowler**

The WTF Iles Memorial Cup – The novice with most points in the summer show – **Brad Sanderson**

Special Awards for the Autumn Show

The Reta Challenge Cup – The best vegetable in the autumn show – **Georgina O'Reilly (Aubergines)**

The Hugh & Marie Jenkins Trophy – The most points for vegetables in autumn show – **Carol Martinez / Raj Patel**

Dr Miguel Lacroze Cup – The best Harvest Collection – B19 – **Vivien Fowler**

The Tommie Noon Cup – The best exhibit in class C54 – 5 different vegetables/fruit - **Carol Martinez**

The Barnes & Mortlake Herald Challenge Cup – The best exhibit of dahlias – **Mariangela Renshaw**

The Jack Hawkins Challenge Cup – The best vase of 4 different types of flower (A8) – **Pat Davis**

The Ben Dandey Memorial Cup – The best vase of roses in the autumn show, either HT or multiflora – **No winner**

The Autumn Cookery Cup (Ladies Cup) – The exhibitor gaining the highest number of points in Section G – **Ruth Barnwell**

The Percy Barnes Memorial Cup – The novice with most points in the autumn show – **Deborah Radford**

Annual Awards

The Reverend PG Wallis Cup – The most points for fruit in both shows – **Vivien Fowler**

The JHP Higgins Cup – The exhibitor gaining the most points in horticultural classes but not successful in winning a major horticultural award – **Jackie Savage**

The Banksian Medal – The exhibitor with most prize money in horticultural sections of both shows – (This cannot be won by the same person within 3 years) – **Raj Patel**

The Rita Noon Cup – The most points in the children's classes in both shows – **Sally Baker**

The RGS Challenge/Paula Alderson Memorial Cup – For the best kept allotment – **Georgina & John O'Reilly**