

ROEHAMPTON GARDEN SOCIETY

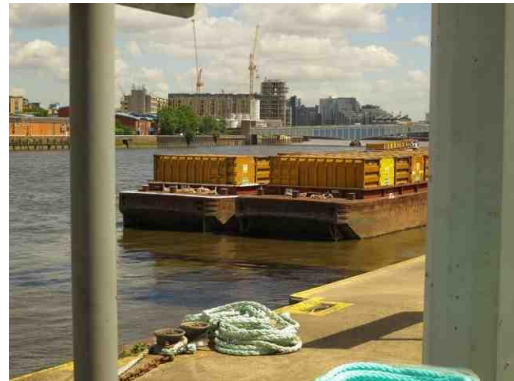
FOUNDED 1873

MONTHLY BULLETIN

June 2014

www.roehamptonallotments.co.uk

Recycling Visit



Thanks to Robert Linton for supplying the photos.

For more details about the recycling trip see report on p.5 'Visit to The Dump'.

Photos of the Summer Show and list of first prizewinners to be found on p.9/10/11.

Chair's report & show report p.2
Store News p.3
Best plots & plot inspections p.4
Visit to the dump & A quiet garden at the Malvern show p.5
Oak tree moth & Granard Bug Hotel p.7
And more.....

Chair's Report

Extraordinary General Meeting

Thank you to all the members who gave their overwhelming support for the decision to start preparing the papers for the RGS to become a Charity. Over 40 of you attended the EGM on Weds 25th June and many others of you who were unable to attend have been enthusiastic about the plan. The Minutes will be posted on the website and if anyone would like a copy posted to them please let me know.

Summer Show, Events and Trips

Once again thanks to Carol Martinez and her team our Summer Show was a great success.

Georgina O'Reilly organised a fascinating trip to the Wandsworth Dump (sorry, re-cycling facility) and hosted, with Barbara McCall, an enjoyable visit from the Sacred Heart Primary School Gardening Club.

July brings Plot Inspections and Wandsworth's Best Plot Competition. I hope your plot is in full production right now and giving you lots of reward for your hard work.

I am sorry that Mike Rigby has resigned from the Committee as he is moving to Wales. A popular figure on Site 2 he will be missed by all.

Have a wonderful summer!
Jackie Savage, Chair, 07508 559134

Welcome to new plotholders

Bryony Warren, Lyndsay Jones and Ned Baker, Kate Heery and Pat Heery.

Summer Show Report

We had a great show on the 14th June. Spring has been good to us and there was a good display of produce – especially plentiful (compared to last year) were strawberries and other soft fruits and there were some amazing lettuces. Broad beans were also abundant.

The new categories proved popular – a display of salad vegetables and the most fragrant rose in the garden both had a handful of entries. It was disappointing that there were only a few novice entries but, hopefully some more at the Autumn Show.

Our new cookery judge Helen was impressed by the standard of cooking and after the next show we'll see if she has any new ideas that we can try for next year.

There were some fantastic funny people made by youngsters Jay and Stephie Angus and lovely flower pictures from Isla O'Reilly and Gracie Boettcher.

The produce stall was very well stocked thanks to generous donations of members. As well as seedlings, a glut of beans and home-made jams there will always be someone wanting to buy those unwanted pots and tools at the back of your shed – so bring them along next time.

The refreshments were as popular as ever with a grand array of cakes to choose from – with a lovely cup of tea to finish off the day.

Thanks to everyone who came along – either to enter the show,

help on a stall, set up the tables or just to visit.

See you on September 13th for the Autumn Show.

Carol Martinez, Show Chair

Show Judges

For many years now we have been lucky to have fellow member and plot holder George Scandrett to judge the **Fruit, Vegetables and Flowers**. This is what George wrote:

“Hi my name is George and I have had an allotment on site 2 for over 30 years. In that time I have been on the committee and shown in most classes at the show, including cookery.

When we could not get a judge one year, I was asked if I could do it. As I had judged the best allotment in Wandsworth, and our own best plot competition for a couple of years, I was not qualified as a judge, however, as I had worked as a gardener for the previous 15 years I was capable of doing it. I still enjoy my plot even though I have had to give up half of it.”

At our Summer Show we welcomed a new **Cookery** Judge, Helen Saberi. She was generous enough to donate two signed copies of her books and they were keenly bid for in our Auction! Helen Saberi, has lived in Putney for more than 30 years, is a food writer/historian. In the 1970s she lived in Afghanistan for nine years. She, her Afghan husband and young son left in 1980 because of the Russian invasion and they came to live in Putney. Her first book *Noshe Djan: Afghan Food and Cookery*, mainly written to record Afghan food and traditions, was published in 1986, followed by

a revised and extended edition in 2000. Her other published books include *Trifle* (2001, co-authored with Alan Davidson), *A Pudding Book* and *A Sausage Book* (2006), *The Road to Vindaloo: Curry Cooks and Curry Books* (2008, co-authored with David Burnett). *Tea: A Global History* was published in 2010 and in 2013 she co-authored a little e-book with Colleen Sen called *Turmeric: The Wonder Spice* which is all about the health benefits of turmeric and how to include it in one's diet with interesting and tasty recipes. Helen is currently writing a book about Teatimes: Past and Present.

Sizzling Summer News from the Store!

We have everything you might need to enhance and protect your precious crops during this wonderful growing season!

Remember we have:

Composts - John Innes Seed, No. 1, 2 and 3 and of course Country Natural Manure.

Fertilizers and soil improvers – Growmore, Blood fish and bone, Dried Seaweed, Rockdust, Poultry Manure, Liquid Maxicrop Seaweed and Maxicrop with Tomato Fertilizer.

Products to protect – Organic Bug Spray, Ant Stop, Slug Pellets, Coppertape, Wondermesh, Soft Anti bird netting and Greenhouse shading.

Helpful support products – various Bamboo Canes and Green Sticks, String, Raffia, various Plant Ties and Rings and much more!

AND – ITS NOT TOO LATE TOO SOW.

LOTS OF SEEDS AVAILABLE IN THE STORE!

There are lots of vegetables that you can sow in July and harvest this year.

In those gaps left from your early potatoes for example you could plant:

PEAS: Kelvedon Wonder and Douce Provence CARROTS: Early Nantes and Purple Haze
CABBAGE: Tundra and Red Drumhead HERBS: Basil and Coriander
PERPETUAL SPINACH and SWISS CHARD, SALADS AND RADISHES and a lot more besides!

We are open every Sunday 10 – 12, come and browse and have a cuppa and cake! Look forward to seeing you!

Barbara McCall, Trading Secretary

Best Plot, Wandsworth Borough Council, 2014 - Certificates of Excellence, Merit or Endeavour.

Judging - RGS - 16 July 2014

As in previous years, the Parks Development team at Wandsworth Borough Council has arranged for an independent judge to oversee the assessment of 10 % of the allotments on each of the Council's allotment sites. Inevitably, this results in one plot holder being judged to have the “Best Plot” in the Borough.

Plots will be judged under four headings: Land Management; Plant Growth/Yield, Pest/Disease Control; Planning to Grow Food throughout the Year; Compost. With these criteria, the Council

wishes to encourage “best allotment practice”.

Site Managers have been asked to submit plot numbers of 10 % of the plots that would be eligible on their sites. With this restriction we need to keep numbers down to about nine [9] plots from Site 2 and sixteen [16] plots from Site 3. If you wish your plot to be assessed, please contact either your Site Secretary or the Site Manager with your name and plot number – otherwise, your plot will be chosen for you. We intend that the judge should be able to assess quality under each of the four headings.

We need to nominate plots to the Allotment Office early in July, for judging on Wednesday 16 July.

Paula Alderson. Site Manager

Plot Inspections 2014 - Thursday 17 and Friday 18 July

As usual there will be plot inspections in July. Once upon a time we completed plot inspections of both sites in a single morning.

Now we undertake the task in a less rushed manner and take part of a weekday morning over each site. We are looking to ensure that plots are being well cultivated by the middle of the growing season and that the paths surrounding a plot are not a navigable danger.

The Site Secretary, the Site Manager and two non-Committee members will make up the team on each Site.

Paula Alderson, Site Manager

Visit to 'The Dump'

On Wednesday 11th June 10 RGS members took the organised tour around the Western Riverside Waste Facility at Wandsworth, known to most of us as 'The Dump'. The Facility was huge, noisy, highly organised and impressive. We watched as goggled workers in high-vis uniforms stood alongside the speeding conveyor belt grabbing contaminated or incorrectly sorted items from the contents of the orange recycling sacks. Plastic bags were flung at speed into the overhead suction openings. The work looked repetitive and exhausting.

We saw 2m. cubes of crushed cans waiting collection valued at £800 each. We saw similarly sized cubes of crushed plastic bottles, some with tops. We learnt that the inclusion of the tops reduced the value of the waste plastic as further sorting had to be undertaken at the recycling plant.

The Western Riverside Waste Facility collects waste from four boroughs, Wandsworth, Hammersmith and Fulham, Kensington and Chelsea and Lambeth. The latest annual statement of accounts states that recycling represents only around 22% of the total waste managed at Western Riverside, although the aim is to get that to 50% in the next 15-20 years. At the moment, the percentage of collected recycling that is contaminated is around 14-15%. This is usually due to the inclusion of food waste or unrecyclable materials.

The unrecyclable waste is packed into large, yellow containers and transferred via barges along the Thames, to the huge incinerator at Bexley in Kent. Using water

transport saves a lot of energy and reduces traffic on our already busy roads. At Bexley the energy generated by incineration from steam powered turbines can provide power for 100,000 homes. None of the waste from the facility goes to Landfills. The percentage of recycling that is contaminated is around 14-15% at the moment. Below is the link to the recycling video we were shown.

[Youtube.com/watch?v=P_ocogEFk58](https://www.youtube.com/watch?v=P_ocogEFk58)

<http://www.terracycle.co.uk/en-UK/brigades.html> - a company that recycles packaging/items that can't be recycled elsewhere, and raises money for charities.

Anyone who missed the visit can organize a visit independently by contacting Western Riverside Authority.

Georgina O'Reilly

A Quiet Garden for the Malvern Show



How can the design of a garden help the visitor achieve a contemplative state? I'm a garden designer and I've been researching this subject for a while both in the UK and in the Zen gardens of Kyoto. This year I was invited to join a team working in close collaboration to design and build a show garden at the RHS Malvern

Spring Flower Festival. It was to be for the Quiet Garden Movement, a charity that promotes the use of gardens for quiet contemplation and spiritual refreshment. This was an opportunity to put into practice what I had learned and what is more this Quiet Garden had to work within a busy showground!

The intention of the garden was to help the visitor focus their attention inwards thus allowing worrying thoughts and the world outside to drop away. Entering the garden via the labyrinth path required concentration, as you had to look down at your feet to stay on the narrow stones. As in a Zen temple garden the path changed direction frequently, which was slightly disorienting, and also enabled you to notice the detail of the planting as you walked past it several times in different directions. The journey to the resting stone at the back seemed quite long. Once there it was good to sit, enclosed by the plants and with the arches and hedge providing security from behind.

The eye followed the lines of the circles of the design, constantly returning the focus to the centre. There the fountain held the attention. The sound of the water was just loud enough to make you listen and the noises of the showground faded away. The soft colours of the planting and the dancing shadows of the birch leaves added to the peacefulness. Visitors found it easy to sit in the garden oblivious to the crowds of people looking in.

People were drawn to it. They came and they looked and looked, lost in reverie. They spoke to us of

what it evoked and they returned later for a last look before they went home. As one of the team said, "There was an overwhelming sense that they connected with the garden and with the message that we were trying to get across." The RHS awarded us a bronze medal but we were really thrilled when we won the People's Choice Award by popular vote. The garden had done its work.



Kristina Fitzsimmons

Email:

kef@kristinafitzsimmons.co.uk

Website:

www.kristinafitzsimmons.co.uk

Blog:

<http://contemplativegardens.blogspot.co.uk>

Obituary for Andrew Fleming-Williams

Irrepressibly energetic, charming and always willing to lend a hand to anyone who needed help, Andrew died recently after a short illness.

When Andrew retired from the insurance industry he filled his life with action, whether it was on his allotment, where his raspberries were much admired, woodturning, sailing, fishing or walking his beloved spaniel Jimmie speedily around Richmond Park. A former magistrate, he was also committed

to prison reform and worked tirelessly for voluntary organisations supporting prisoners, including the Prison Reform Trust and Trailblazers.

Andrew lived in Putney for more than 30 years and he was truly a man of many parts, contributing enormously to local life. He will be greatly missed by all his many friends. Our thoughts go out to his widow Fiona and their family at this time.

Jane Baillieu

Our Oak Trees Need You! Oak Processionary Moth

At the Chelsea Flower Show a stand, sponsored by the City of London, highlighted the oak processionary moth (OPM) and the need for the public to be aware of the risks it presents to our native oak tree, our wildlife and to our communities.

OPM is native to mainland Europe and was accidentally introduced to the UK in 2006. It is already widespread in London and has affected many trees in Richmond Park and Kew Gardens.

The caterpillars feed on oak leaves and can strip the tree bare leaving it vulnerable to pests, diseases and extreme weather. The tiny caterpillar hairs contain a substance that can cause rashes and irritation and in some cases breathing problems. The most effective control is a combination of surveying, spraying and nest removal.

What can I do?

Survey oak trees regularly and if you see OPM nests or caterpillars report the sighting (with photo if possible) to your local council or opm@forestry.gsi.gov.uk

DO NOT TOUCH THE CATERPILLARS OR THE NEST

If you see a nest with a ring painted round it you know it has already been notified.



More information on:
www.forestry.gov.uk/oakprocessionarymoth

Granard School are building a 'Bug Hotel' – help wanted from allotmenters!

Allotment holders, gardeners and insect lovers, we need your waste! In September, the children at Granard Primary School will start a project to build a bug hotel - a shelter made from recycled materials, which will provide a home for mini-beasts of all sorts and sizes. If you are having a clear out or tidying up your plot and have unwanted materials that could be

used to construct our bug hotel,
please do get in touch with either
Deirdre Chapman
deidrechapman@gmail.com or
Helen Speedy
helenspeedy@gmail.com.
You may also leave smaller items
in the labelled box outside the RGS
store. Ideal materials are
old/broken terracotta pots, bamboo
canes, wooden pallets, branches,
sticks, rubble, bricks, pipes, bark,
pine cones, plastic bottles and
plant pots. Thank you!

July Recipes

Using early beetroots. If you roast
some beetroots you can save some
to use cold in the salad.

Roasted Beetroots with thyme

6 -8 small to medium beetroots
2 tablesp. Olive oil
1 tablesp. Balsamic vinegar
Handful of chopped thyme
Pinch salt and freshly ground
pepper

Heat oven to 180C OR Gas 5
Scrub the beetroots and cut into
quarters.
Place a large piece of tinfoil on a
baking tray and put the beetroots
on it.
Pour over the oil, vinegar, thyme
and seasoning and toss gently to
coat the beetroots.

Draw up the tinfoil into a parcel and
bake for 45 minutes to an hour until
cooked.
Serve with roast meat or fish.

Roasted Beetroot & Feta Cheese Salad (serves 2)

2 medium roasted beetroot, peeled
and cut into slices
100g-baby spinach

Small red onion, quartered and
thinly sliced
½ cup walnuts, coarsely chopped
100g-feta cheese, crumbled
1 tablesp.olive oil
½ tablesp. Balsamic vinegar
½ teasp. Dijon mustard
salt & pepper

Prepare the dressing by placing the
oil and vinegar, mustard and
seasoning in a screw top jar and
shake well.

Place the washed spinach in a
dish, sprinkle over the onion,
beetroot, feta cheese and walnuts
and pour over the dressing.

French Bean Salad

250g French beans, stalks
removed
1 small onion, finely chopped
1 clove garlic, finely chopped
3 tablesp. Olive oil
1 ½ tablesp. Wine vinegar
1 teasp. French mustard
Salt and freshly ground black
pepper
Handful of parsley, chopped

Cook the beans in boiling salted
water for 4/5 minutes until just
cooked.

To make the dressing put the oil,
vinegar, mustard and seasoning in
a screw top jar and shake well.

Drain the beans and place in a
serving bowl and toss immediately
in the dressing. Sprinkle over the
parsley.

**Reminder: the Autumn Show is
on 13 September.**

**The September Bulletin will sent
out and be on both sites by
Sunday 31 August and will have**

the show schedules and entry form included.

THE SUMMER SHOW



The Hall



Goblet



Show goes



***Pat, our champion rose grower
serving tea at the show***



Raj: Best in Show

***With thanks to Clare Savage for
supplying the photos.***



Examining entries

SUMMER SHOW: FIRST PRIZE WINNERS

Section A – Flowers

1. Vase containing 1 HT rose, excluding red varieties
JOHN & MARY IRELAND
2. Vase containing 1 red HT rose
PAT DAVIS
3. The most fragrant rose in the garden
JOHN & MARY IRELAND
4. *Vase of multiflora roses, 3 stems of any variety
DAVID ROSSITER
5. *Bowl of any number of roses arranged for an all-round effect
MARIANGELA RENSHAW
6. Vase of delphiniums, 3 spikes
PAT DAVIS
7. Vase of any 1 kind of annual, excluding sweet peas
JOHN & MARY IRELAND
8. Vase of 6 stems of sweet peas, any 1 variety
GEORGINA O'REILLY
9. Vase of 12 stems of sweet peas, can be mixed varieties
GEORGINA O'REILLY
10. Vase or bowl of pansies or violas with own foliage, not more than 12 stems
JACKIE SAVAGE
11. Vase of perennial flowers of any 1 kind
SUE MACDONALD
12. Vase of 9 stems or less of mixed perennial Flowers
NO FIRST
13. *Vase of cut flowers, 3 or more kinds with any foliage, arranged for all round effect (RG Society vases must be used)
PAT DAVIS
14. Vase of flowering sprays of any 1 shrub
BARBARA MCCALL
15. Vase of mixed flowering sprays from shrubs
NO ENTRIES

16. My favourite pot plant
RAJ PATEL

17. Arrangement in a goblet of flowers and/or leaves
EILEEN MAY

Section B - Vegetables

18. 3 asparagus spears
NO FIRST
19. 6 pods of broad beans
CAROL SEWELL
20. 1 cabbage with at least 5 cm stalk
NO ENTRIES
21. 1 lettuce, any variety, with roots
GEORGINA O'REILLY
22. 2 courgettes
RAJ PATEL
23. 3 different herbs, in small bunches,
PAM PARTRIDGE
24. 3 onions, autumn grown with tops and roots intact
PAULA ALDERTON
25. 12 pods of peas
DANIEL BOETTCHER
26. 12 peas, mangetout or sugar snap
JACKIE SAVAGE
27. 4 Potatoes of any one variety
JOHN & MARY IRELAND
28. Bunch of 6 radishes, with tops and roots
NO FIRST
29. Bunch of 6 salad onions
JOHN & MARY IRELAND
30. 9 shallots (pickling)
NO ENTRIES
31. 3 garlic bulbs
CAROL MARTINEZ
32. 3 sticks of rhubarb (natural)
GEOFF WATERHOUSE
33. Any other kind of vegetable
RAJ PATEL
34. A display of 3 different seasonal vegetables that you like in a salad (see description of salad vegetables in guidance notes)
RAJ PATEL

Flower/vegetable/fruit - mixed

35.1 flower, 1 f fruit, 1 vegetable
(salad or otherwise)

JOHN & MARY IRELAN

Special Entry

36. Any **ONE** fruit/vegetable/plant
you are proud to display

MARIE ESTELLE HUGHES

Section C – Fruit

37. Dish of 15 gooseberries

DAVID ROSSITER

38. Dish of 15 raspberries, with calyx

MARIANGELA RENSHAW

39. Dish of 12 strawberries, with calyx

SUE MACDONALD

40. Dish of any other kind of fruit

RAJ PATEL

Section D – Novices

41. Vase of mixed Flowers

NO ENTRIES

42. Vase of 3 stems of any variety of
roses

NO ENTRIES

43. Display of vegetables, numbers as
list above

JENNY GORLE

44. Dish of fruit, numbers as list above

JENNY GORLE

45. My favourite pot plant

NO ENTRIES

46. A display of 3 different seasonal
vegetables that you like in a salad

NO ENTRIES

Section E- Children (under 14)

47. Colour picture of a flower – any
medium (paint, crayon, collage)

ISLA O'REILLY (2.2)

EVIE BOETTCHER (9)

48. Funny animal or person made of
anything grown

JAY ANGUS (5)

STEPHIE ANGUS (3)

49. Cookery - A cookie

NO ENTRIES

Section F - Cookery

50. Glass jar of marmalade

JO MEDLAR

51. Glass jar of lemon curd

JOINT: LAURA DAVIS & JO

MEDLAR

52. 6 scones (plain)

JO MEDLAR

53. A fruit flan

NO FIRST

54. A rhubarb dish

JO MEDLAR

55. Plain Victoria sponge (as per
attached recipe)

LAURA DAVIS

56. A seasonal sweet item of
cookery – i.e. tart, dessert, cake

JO MEDLAR

57. Plate of biscuits (any 1 type)

JO MEDLAR

58. A seasonal savoury item of
cookery – i.e. quiche, pie, flan

BARBARA MCCALL

59. Plain or wholemeal bread (any
size/shape) made in either
traditional way or in bread
maker. Present on board/tray

NO FIRST

60. Homemade wine, cider or
infused spirit

NO ENTRY

61. Homemade fruit juice

NO ENTRY

Competitions judged by visitors

1. A photograph

SUSAN CLARK

2. A photograph (under 16)

GRACIE BOETTCHER

3. A flower arrangement in a
teapot

SHEILA KONIG

NOTICES

RGS CONTACTS

Site Manager is Paula Alderson;
Site 2 Allotment Secretary is
Georgina O'Reilly;
Site 3 Allotment Secretary:
Helen Finch & Paula Alderson

SECURITY

If you see anyone trespassing or
causing damage on the Sites or in
an emergency phone 999 or text
phone 18000.

DISCOUNTS

10% discount to RGS card holders
when you show your RGS card:
Adrian Hall Garden Centre at
Sheen;
Capital Gardens, opposite
Wandsworth Prison.

DATES FOR

2014 DIARIES

Autumn Show
AGM

13 September
26 Nov

Small Ads

The Cartridge People

Help raise funds for the RGS while
saving money yourself when you
buy ink cartridges from the
"Cartridge people":

**[www.cartridgepeople.com/
RaisingMoneyFor/Roehampton-
GS](http://www.cartridgepeople.com/RaisingMoneyFor/Roehampton-GS)**

10% of your order goes to RGS

Recycle Used Cartridges in the
box in the Store.

The Conservation Foundation Tool Shed

Mend and re-furbish broken and old
gardening tools for schools.

conservationfoundation.co.uk

THE STORE

The Store is open Sunday morning
between 10.00 a.m. and noon.
There is a café serving, tea, coffee
and homemade cake.

We are always looking for
volunteers to help run the Store on
Sunday mornings. If you can help
Contact Carol Martinez via the
website:

**[www.roehamptonallotments.co.u
k](http://www.roehamptonallotments.co.uk)**

Or leave a message in the Store or
email at

**[root@roehamptonallotments.co.
uk](mailto:root@roehamptonallotments.co.uk)**

www.vegetableseeds.com

AUSTIN MOWERS (sharpens shears as well)

300 Garratt lane, SW18 4EH.
020 8874 4206

**www.austinmowers.com
austinmowers@aol.com**

NEXT BULLETIN

Comments, questions to Chair &
Committee via the website:
root@roehamptonallotments.co.uk
Comments and copy for the next
Bulletin, by 25 August 2014 please,
to Pat Dark (tel. 8789 7568) 27 St
Margarets Crescent, SW15 6HL.
patdark13@yahoo.co.uk

**Please note there is no
August Bulletin.**

**Next Bulletin: Sunday 31 August
2014, by email, in the Store and on
both sites.**