

ROEHAMPTON GARDEN SOCIETY

FOUNDED 1873

MONTHLY BULLETIN

September 2020

www.roehamptonallotments.co.uk

On Sunday 27th September plot holders gathered to see Jackie Savage present Helen Finch, our Chair with the RHS Banksian Medal to thank her for keeping us all safe during the pandemic.



The medal is usually presented at the AGM to the winner of the most points in the shows, but as there have been no shows this year it was a unanimous committee decision to award it to Helen.

Earlier in the month I received the following letter from an anonymous plot holder on Site two.

Dear Editor

I would like to express my thanks, and I'm sure those of the Roehampton Garden Society community, to the Chair and the RGS Committee for the exceptional care, commitment and kindness that has been shown during the lockdown and since.

Because of their excellent work the Sites have stayed open but secure. Indeed, allotment life

has remained largely unchanged allowing plot-holders a sense of normality that we have all needed and appreciated.

Yours sincerely

Helen had the following to say...

"I was very surprised and delighted to receive this award. I had no idea that I was going to a presentation today! Thank you for thinking to give me the Banksian Medal and for your kind words all done in such a wonderfully conspiratorial way. However, I must stress that nothing would have been possible without our fantastically resourceful and positive committee so many many thanks should go to them too".



The medal is named after Sir Joseph Banks who was a naturalist, botanist and patron of natural sciences. He accompanied Captain Cook on his first voyage between 1768-71 to Brazil, Tahiti, New Zealand and Australia. He was President of The Royal Society for 41 years and advised King George III on setting up the Royal Botanical Gardens at Kew.

Chair's Report

Our new President Fleur Anderson, the MP for Putney, Roehampton and Southfields, came to visit us on the day we planned to have the Autumn Show. Although we had to cancel the show due to the increased prevalence of Covid, Fleur was keen to see our allotments. I took her on a tour of both allotment sites which gave her the opportunity of meeting some of our members. It was lovely to meet her and I felt RGS now has a very good ally as our President.



The site 3 water saga has progressed. We now have 11 new shiny water tanks in place but are still awaiting connection to the water supply by Thames Water. It has been very difficult for plot holders at the south end of the site as they currently have very poor access to water. They valiantly have been managing under very difficult circumstances. One of the legacies of the Ditch Witch has been loose stones on the main path which would be a hazard when the grass was mowed so we had a stone pick-up party on Sunday 13th. Lots of rakers and pickers volunteered to take on this task which made the occasion jolly. Many thanks to you all.



Shan & Christina

The volunteers more than deserved their cake and drink after all their hard work. It was great to be able to enjoy these treats in the outdoor communal area on site 3 after the stone picking was done. The photo features Bob's wonderful 'Rising Sun' structure as well as the tired workers. The raised beds were ingeniously made by Greg using pallets and they have been beautifully planted by Vivien. Although unfinished the area has been such a pleasure to those on site 3 on many occasions. Jackie also deserves a huge thank you for pushing the project along and getting things done.



By the time this Bulletin is published some progress will be evident in the Site 2 communal area behind the store. There will be a very useful saving on the cost as, mainly thanks to Elaine and Carol, plenty of pavers have been collected for the hard-standing area.

On site 3 we still have no arrangement with EDF regarding having a meter installed. Unfortunately, no meter means no power. However, we hope to be making some progress with installing the electrics and facilities inside the cabin soon.

It has been a very productive time for our allotments over the last few months which has made up for the lack of shows and other difficulties due to Covid. However, we all realise how lucky we are to have a plot during these strange and difficult times and being gardeners, we have the resilience to weather this particular storm.

Helen Finch, RGS Chair



Autumn colours on Catherine's plot

Store Report

IN STOCK FOR SOWING THIS AUTUMN - READY TO HARVEST NEXT SPRING



BROAD BEANS

(e.g. Aquadulce
Claudia & De
Monica)



OVER WINTERING PEAS

(e.g. Meteor)

CABBAGE (eg Wheelers Imperial)

LETTUCE (eg Winter Density)

WINTER HARDY SPRING ONIONS (White
Lisbon)



GREEN MANURES e.g.

Field Beans are a hardy nitrogen fixer sown between September to November. The plants suppress weeds and attract useful slug predator (beetles and frogs love cool, damp conditions). Dig them in before they flower and wait at least 2 weeks before sowing in March and you will have beautiful friable soil



ONION SETS - Senshyu

Yellow is a heavy yielding, over wintering variety. Plant the sets up to mid-October, to avoid problems of bolting.

They should then be ready for harvest in June. They are a very hardy Japanese variety, with semi-globe shaped bulbs. Their skin is golden with a white flesh underneath.

SHALLOTS



Eschalote Grise is a Gourmet Shallot, the first choice in shallots for top French Chefs. **Shallots Longor** are a good shape with a good yield. Strong and flavoursome with good storage quality.

GARLIC

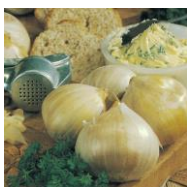


Solent Wight (soft neck) and **Kingsland Wight** (hard neck).

Soft neck versus Hard neck:
There are two distinctive types of cultivated garlic.

Soft neck is easier to grow, has plenty of cloves and stores well. Hard neck produces fewer but larger cloves and because they have a thinner skin have a shorter shelf life. It also produces flower stalks as part of its natural growth.

Elephant Garlic



Not a true member of garlic family, it is closer to a leek. It has a fresh, juicy, mild sweet flavour which makes it ideal for baking and roasting. Each bulb is approx. 12.5-15cm (5-6") across

FLOWERING BULBS

VARIETIES IN STORE TO KEEP YOUR PLOT / GARDEN ALIVE WITH COLOUR

ALL SPRING!



DAFFODILS (plant Sept/Oct). **TETE A TETE**, **JETFIRE** and a mixed selection of **CYCLAMINEUS** **NARCISSI**.



ALLIUMS (plant any time from Sept onwards)

PURPLE SENSATION and **CHRISTOPHII**
ALBOPILOSUM



TULIPS (plant Oct/Nov)

BALLERINA, **ANTRACIET**, **ALFRED**
CORIOT and **APELDOORN**

Jackie Savage

See the RGS website for jobs to do this month

<http://www.roehamptonallotments.co.uk/growing-things/plot-jobs-month-by-month/>

Welcome to new plot holders

Site 2

John Woodward

Site 3

Hayley Titmuss
Medet Kaya

Autumn Show Photos

As once again we had to cancel our show here is a show case of the wonderful crops grown by our plot-holders.

Flowers



Mariangela's dahlias



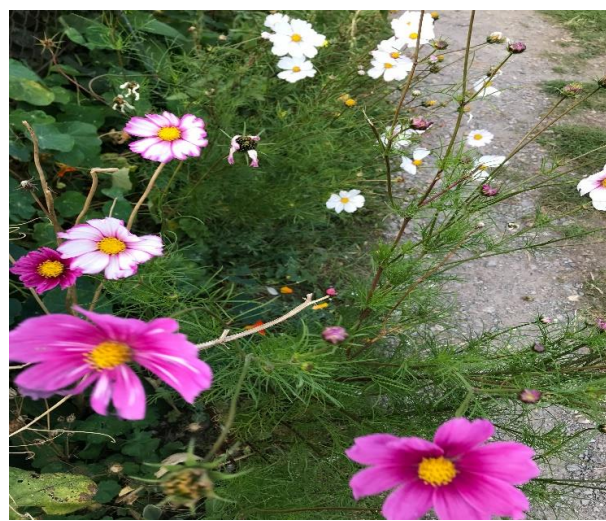
Rob and Ali's artful Nicotiana Whisper



Anne Marie's red-hot poker



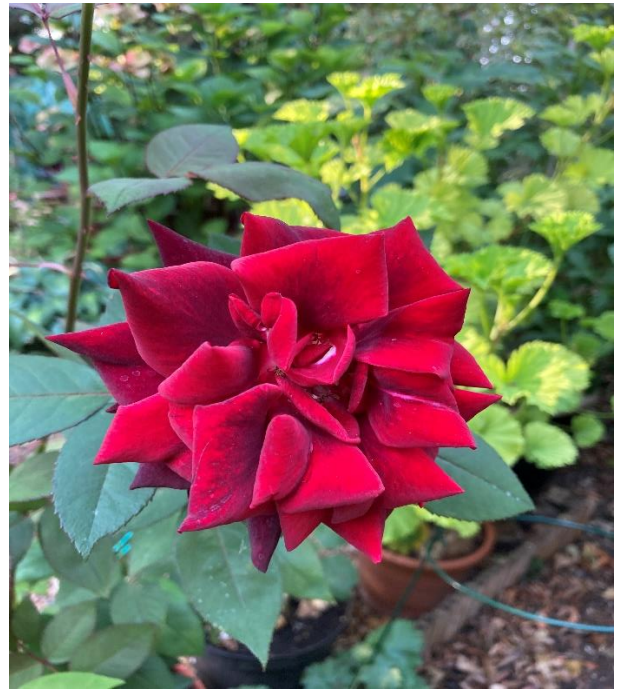
Helen's lovely bouquet



Natalya and Nina's Cosmos



Vivien's dahlia



Richard's rose grown from a cutting taken in Sardinia



Raj with various flowers



Anne-Marie's sunflowers

Fruit



Jackie's Fiesta apples



Jonathan & Helen's selection of outdoor melons



Val's Granny Smiths



Val's cantaloups



Vivien's pears



Carol's small hand with large fig

Salad Vegetables



Georgina's Red Ace beetroot



Carol's salad selection



Sally's Gororez peppers



Val's cucumbers



Mariangela's parsley

We Tomatoes



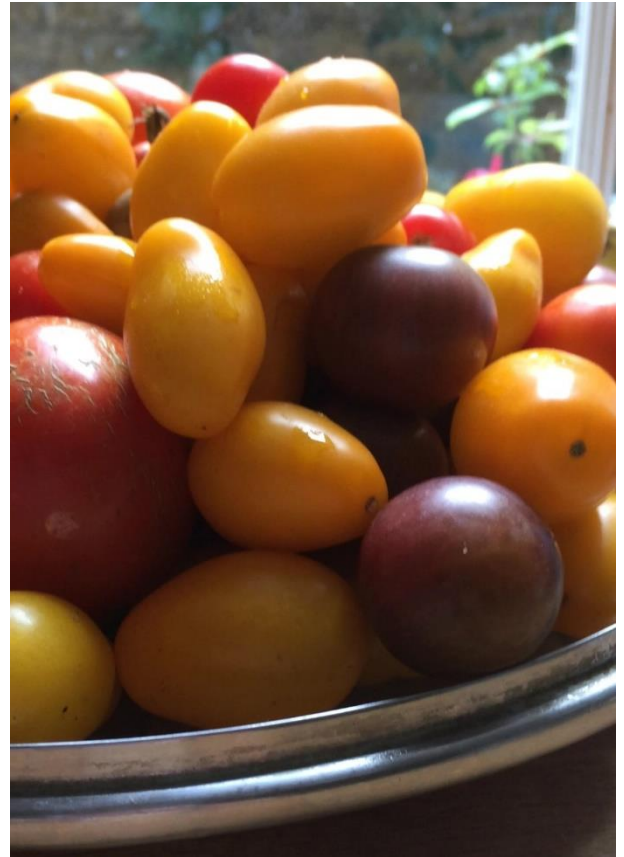
Catherine's lovely sentiment



Val's Coeur di Bue



Louise's colourful collection



Julia's too



Sheila's look just right to make a pasta sauce

Vegetables

Aubergines



Florence's Black Beauty



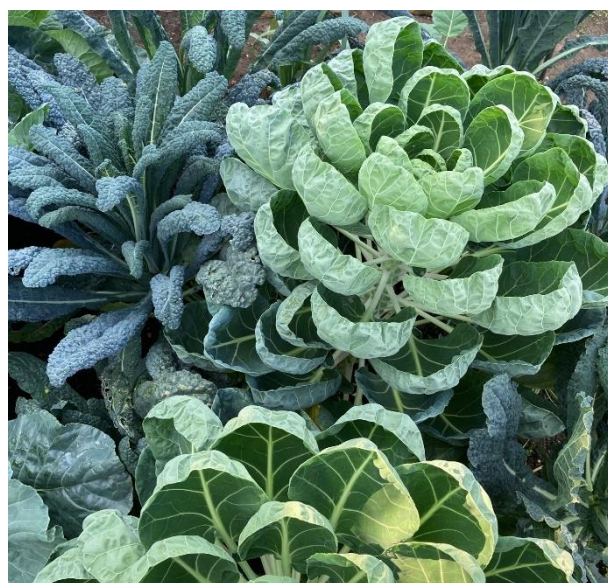
Sally's Money Maker



Ruth's Long Purple



Mariana's



Anne Marie's brassicas



Anne Marie's broad beans



Carol's collection

Chillies



Sally's longhorn



Vivien's selection

Garlic



Jackie's Solent Wight

Anne Marie's



Helen's



Catherine's kohlrabi has just landed



Bruce's marrow



Carol's padron peppers



Sally's Kubista peppers



Carol's Picasso potatoes

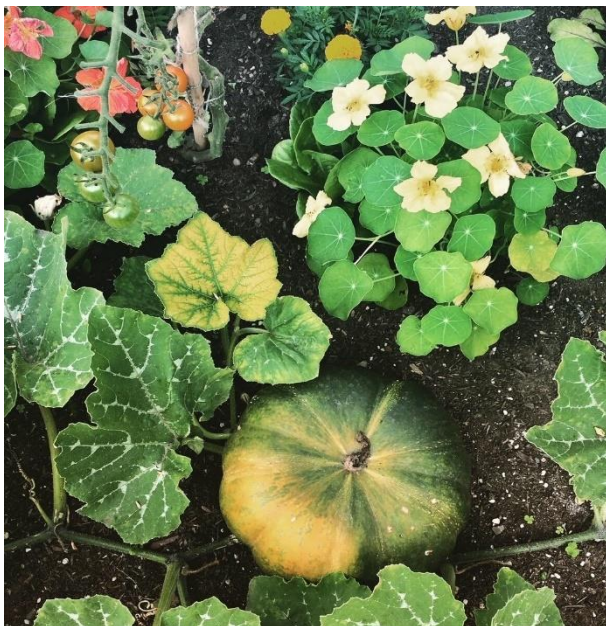


Mr. Mole visited Catherine's plot



Nicky and Jonny's pumpkins

Squash



Anne Marie's



Emma's collection



Catherine's



Raj's squashes are nearly as tall as him.



Anne Marie's UchikiKuri



Mariangela's



Helen's ball courgettes and Turk's Turban squash



Florence's sweet potatoes



Sally's sweet corn, Lark

Harvest Collections



Vivien's



Ram's



Mark and Sue's

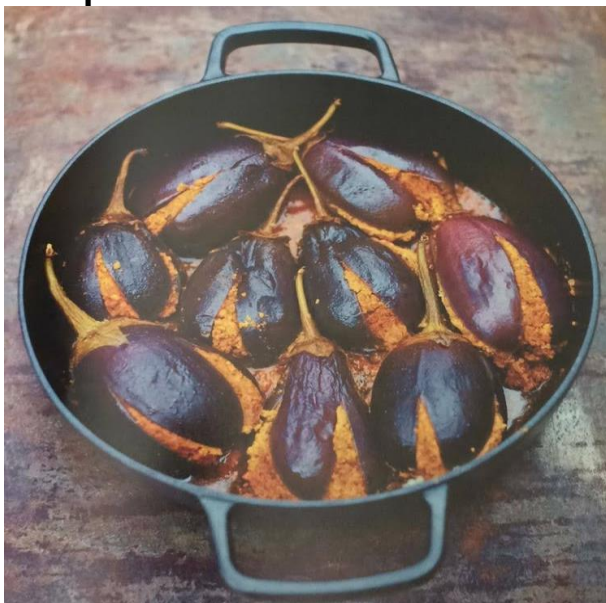


Carol's



Raj's giant vegetables

Recipe



Baby aubergines stuffed with peanuts and coconut.

Ingredients (for 4)

12 baby aubergines
60g desiccated or fresh grated coconut
120g roasted unsalted peanuts
40g fresh coriander
8 cloves of garlic
1 green finger chilli
2 tablespoons tomato puree
1 teaspoon ground cumin
 $\frac{3}{4}$ teaspoon ground turmeric
1 teaspoon sugar
1 & $\frac{3}{4}$ teaspoons salt
3 tablespoons vegetable oil
1 large onion, sliced

Method

Cut each aubergines in half lengthways, roll over and cut lengthways again, leaving stem whole. Put in bowl of cold water and set aside.

Put a large lidded frying pan on a medium heat and when hot toast coconut & peanuts for 2-3 minutes. Tip out and leave to cool.

Put coriander, garlic, chili, tomato puree, cumin, salt, sugar & turmeric into a food processor with cooled coconut & peanuts. Pulse until coarsely ground and fully mixed.

Open each aubergines out like a flower and fill with mixture. Roll aubergines over, open & stuff again, then press closed. If any mixture left, keep to add to pan later.

Put pan over medium heat, when hot fry onions until soft. Add aubergines & 2 table-spoons of water. Turn heat up high and cook for a few minutes then put on lid and turn heat down. Cook for 10 minutes then turn the aubergines over, adding a little more water if looking dry. Cook for a further 20 minutes or until tender.

Serve with rice or chapatis plus a cucumber and mint raita.

Recommended by Julie, Site 2

Wild life spotting



This rather exotic creature, a Vapourer moth caterpillar, was spotted on site 2 by Valerie. The hairs of these **caterpillars** can cause skin irritation (redness, itching and swelling) so it's best to avoid handling them. They are still fairly uncommon in this country so aren't a significant pest.

They can be seen on Birch, hazel, lime and many other broadleaved trees and shrubs including *Cotoneaster* and *Pyracantha*.

The adult moths emerge August to September.

New banner



We have invested in a new banner for when we can once again attend events where we can promote our allotments to the local community and sign them up for the waiting list, which by the way has got longer during lockdown.

Staying Safe and well on the allotments:

Hands – Face - Space

Stay within your **own** plot and only use your **own** gardening equipment.

Any surface that is **communal** could be **contaminated** so **avoid touching**:

- **The gate**: it is possible to open and close the gate **without touching** it with your hands.
- **Taps**: the virus will survive on metal surfaces, so taps are likely to be contaminated. Safer to use your **own watering can** filled with water from the **dipping tanks**. If you have to use the taps, cover your hand or glove with a **plastic bag** which you then **turn inside out** and **discard**. The bag is easier to remove from your hand than disposable gloves without contaminating your hand.
- Keep some **hand sanitizer** with you or in your shed.

Gloves do not protect you or stop the spread of Covid-19. Keep gloves away from your face. Take care, when removing them, you do not contaminate your hand with the outside of the glove.

At best a Covid-19 infection is nasty, at its worst, catastrophic. We must **all stay well**.

RHS CONTACTS

Committee Chair: Helen Finch.

Site 2 Allotment Secretary: Catherine Maunsell-Bower.

Site 3 Joint Allotment Secretaries: Vivian Fowler & Alison Linton

Site Manager: Charles Gilbe

Comments or questions for Chair and/or Committee via website:

rgs.sw15@gmail.com

All policies and procedures are on our website.

www.roehamptonallotments.co.uk

RGS ADDRESS AND POST BOX

(Fixed to the right of the gate at site 2)

Roehampton Garden Society
The Pleasance Allotments
The Pleasance
London SW15 5HF

BASIC RULES FOR THE PROMOTION OF SOCIAL COHESION ON OUR ALLOTMENT SITES

- Respect the rights and belongings of other plot- holders.
- No dogs without leads.
- No unsupervised children.
- Lock the gate behind you.
- Dispose of your own rubbish.
- No structures to be erected or trees to be planted without permission of your Site Secretary.

If you think someone is breaking the rules contact a committee member or me, Helen Finch, rather than confront another plot holder. Helen.finch2@btinternet.com
07736 422373

SECURITY

If you see someone trespassing or causing damage on the Sites, or in an emergency phone 999 or text phone 18000.

NEXT BULLETIN

November 2020. Editor Carol Martinez.

Email stories and photos to

carolmartinez@hotmail.co.uk by 16th

November 2020. *Recipe suggestions always welcome.*