

ROEHAMPTON GARDEN SOCIETY

FOUNDED 1873

MONTHLY BULLETIN

March 2020

www.roehamptonallotments.co.uk

Chair's Report

The committee have been very busy looking at various projects to improve facilities on both allotment sites and have settled on some that we plan to complete within this financial year. The biggest one is getting a social communal shed on site 3. This project is coming along. Bob Aveling has kindly agreed to make part of his plot available which is the ideal spot next to the toilet hut. Vivien Fowler has done a huge amount of design and research work with the help of Greg Wilcox. Jackie Savage has kindly agreed to take on managing the project. Also, we are looking at the best option for getting power on site 3 but more research needs to be done before I can report back. We haven't forgotten about a communal shed on site 2. The plot behind the store has become available so it has been identified as the best place for the communal shed. Another project we are keen to progress is making the store doors function properly. The current doors are broken and rotting at the bottom, they don't latch and are a poor fit resulting in a lot of draught. So, the plan is to have new doors that latch properly which can be opened from either side. They will be weather and draught proofed and will have hinges that mean we can have the doors fully open and pinned back flat against the outside of the store walls so doors don't catch the wind and get broken again.

We also will be getting a soak-away installed near the store. As store volunteers know, wastewater from the store kitchen currently is collected in a bucket but once the soak-away is done this water will drain into it as will an overflow from the water butts.

Talking of water, the water system upgrade on site 3 is still in progress. There has been a bit of a hitch with Thames Water but the expectation is this will be resolved very soon and for the project to go ahead.

So, as you see the committee have been busy and hopefully you will see activity on both sites soon.

Helen Finch, Chair

Seed Swap



The seed swap was held on Sunday 19th January. Some seeds were swapped but if none were found amongst the choice that people wanted then donations were made. We will do this again next year as it was deemed a success.

IT'S SEED TIME!

Kings Seeds - 20% discount to members

Here is a list of the seeds we have in stock at the store that you can sow in March / April. We have chosen varieties that we recommend and know work on our soils.....

SOW INDOORS / UNDER GLASS

AUBERGINES - Long Purple, Black Beauty.

BROKALI - Atlantis

BROCCOLI Summer Purple, Burbank, Purple Sprouting

BRUSSELS SPROUTS Crispus (club root resistant), Red Bull, Flower Sprout Petit Posi (Kalettes)

HERBS Basils, Chives plain and garlic, Coriander, Dill, Parsley, Purslane, Thyme, Rocket

CELERIAC Prinz, Asterix

COURGETTE Ambassador, Atena Polka, Black Forest, Nero di Milano, Tondo di Nizza, Defender, Floridor, Zucchini

CRESS Fine Curled, Land

CUCUMBER - La Diva, Mini Munch, Marketmore, Telegraph Improved

PEPPER, CHILLI - (Chillies need 21 degrees to germinate.)

Don't forget 2020 is RGS year of Chilli with a special cup award.

Apache, Early Jalapeno, Habanero Orange, Hungarian Black, Hungarian Hot Wax, Long Slim, Tabasco, Scotch Bonnet & Trinidad Perfume

PEPPER, SWEET - Astor, Long Red Marconi, Lunch Box Mix & New Ace

TOMATO Mountain Magic, Alicante, Black Russian, Black Opal, Fandango, Gardeners' Delight, Gigantomo, Golden Crown, Shirley, Yellow Perfection, Marmande, Sungold & Tigerella

TOMATILLO Verde

SOW DIRECT OUTSIDE

BROAD BEANS Aquadulce Claudia, De Monica, Karmazyn, Masterpiece Green & The Sutton

BEETROOT Barbabietola di Chioggia, Boldor,

Bolthardy, Cylindra, Pablo & Red Ace

BEET, LEAF Bright Yellow, Rainbow Chard, Rhubarb Chard, Swiss Chard & Perpetual Spinach

CABBAGE Caraflex, Kalibos, Kalibro, Kilaton, Red Lodero, Spring Hero & Wheelers Imperial

CARROT Amsterdam Forcing, Early Nantes, Chantenay Red Cored, Flakee, Flyaway, Katrin, Paris Market, Sweet Candle

CAULIFLOWER Clapton, Boris

CHICORY Palla Rossa, Rossa di Treviso

KALE Dwarf Green, Nero di Toscana, Cottagers, Scarlet

KHOL RABI Purple Delicacy

LEEK Below Zero, Musselburgh, Blue Solaise

LETTUCE (& Cut and Come Again leaves) All year round, Analena, Intred, Little Gem, Lobjoits Cos, Oakleaf Navara, Mixed Leaves, Pigal, Salad Bowl

PARSNIP - Gladiator, Imperial Crown, Tender and True

PEAS Shelling: Early Onward, Hurst Greenshaft, Kelvedon Wonder, Meteor

Sugar snap & Mangetout: Oregon Sugar Pod, Delikett, Purple Magnolia, Nairobi

Pea Shoots: Serge

POTATOES Start planting early varieties when the weather is warming. (5 Varieties available in store)

RADISH Cherry Belle, French Breakfast, Diana

SPINACH Amazon, New Zealand, Matador

SPRING ONION White Lisbon, Ishikura

TURNIP Milan Purple Top, Golden Ball

FLOWERS Sow hardy annuals for companion planting such as calendula and tagetes indoors for earlier blooms. (In Store: Durango Mixed, Naughty Marietta & Starfire) also we have Sweet Peas of all colours and scents

Plot Jobs and advice for March can be found on our website at

<http://www.roehamptonallotments.co.uk/category/plotjobsbymonth/>

Welcome to new plot-holders:

Site 3 – Nicole Pound

Store Report

Many of you will be sowing your seeds this time of year. There are lots of items available in the Store to support this. We have a choice of seed composts. Gro-Sure Seed and Cutting Compost is popular with our members. It is sold in easy to carry 10 litre bags for £3.50. John Innes Seed Compost is £4 per bag for 25 litres. We have a couple of bags of the Dalefoot Wool Compost left but we will not be ordering more as the price has increased further this year. They are priced at £8.50 for a 12-litre bag. If more were ordered, they would have to be priced at £9.50!

We still have root trainers in stock at £5.50 per set which are excellent for growing seeds with long root development. We also sell seed trays, either with holes for drainage or without holes. Vermiculite is sold loose at £2.50 per kilo and we now also sell Perlite at £2 per kilo following a request from one of our members.

The potatoes, onion and shallot sets are selling well. To promote their growth, potato and onion fertilisers are sold loose. The potato fertiliser is £1 per kilo and the onion fertiliser is £1.50 per kilo. We have arranged regular deliveries of Country Natural during March and April and we hope that this will be sufficient to meet demands of this very popular product.

The Store will be open on Saturdays in March this year from 11am to 12 noon.

The dates of opening are 7th, 14th, 21st and 28th March.

Gill Tamsett
Trading Secretary

Obituaries

I am sorry to report that there have been 2 more deaths this winter, both on Site 3.

Americo Prazeres, 1935 – 2020

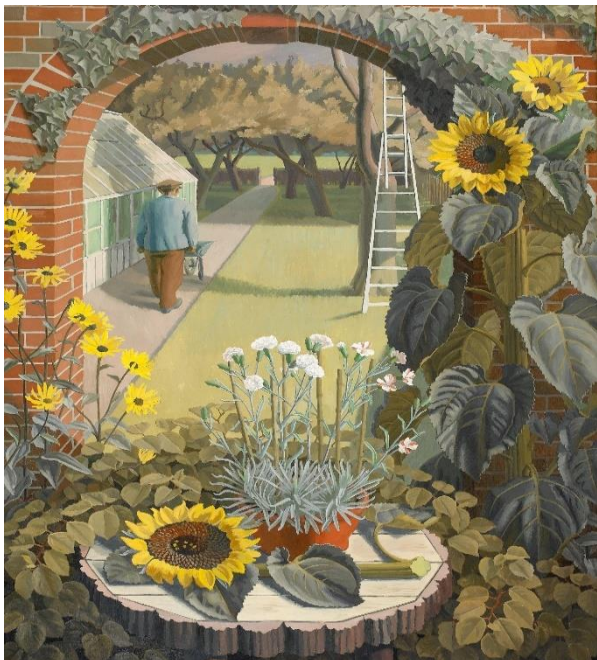
Americo loved his plot and his vines were his pride and joy. Every year he produced an excellent 'vintage' some of which he shared this with his neighbours. They would have supper to celebrate the new wine, a fun occasion, they were all well into their eighties! Last summer he tended his plot with an oxygen cylinder on his back but always with a cheery hello and a twinkle in his eye. We will miss him very much.

Ray Clements, 1934 – 2020

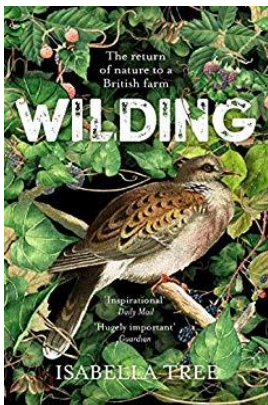
Ray frequently came to his plot over the summer and although more recently he did not enjoy good health, he loved being on site. He was always very friendly and cheerful so it is especially sad to have lost another long-standing plot holder with such a pleasant positive approach to life.

Exhibition at the Garden Museum Lambeth Palace Road, SE1 7LB

Sanctuary: Artist-Gardeners 1919-1939



Book Review



Book Review by
Jackie Savage (with
thanks to the
Guardian)

“Wilding” by Isabella
Tree

Published by Picador

This inspirational and fascinating book is written by one of the owners of 3,500 acres in Sussex who joined the rewilding revolution and brought back a profusion of plants and animals.

The book describes an attempt to renew the ecosystem, after decades of intensive

The exhibition celebrates a generation who painted and gardened in the years between the wars.

At its centre is a circle of friends who met as students at the Royal College of Art: Charles Mahoney, Edward Bawden, Barnett Freedman, Percy Horton, and Mahoney’s partner and collaborator, Evelyn Dunbar.

Later, they left London to make homes and gardens: Bawden at Great Bardfield and Mahoney at Wrotham in Kent. They exchanged plant cuttings by letter, moved to the country, sowed then painted flower after flower. At Great Bardfield, Bawden grew towering sunflowers which his friend Mahoney could often be found sketching.

Sanctuary: Artist-Gardeners 1919-1939 will explore this green-fingered generation of artists between the wars, and ask, why did so many turn to the garden?

26 February - 5 April 2020

agriculture of the farmland owned by Tree’s husband Charlie Burrell at Knepp (near Horsham) in West Sussex. The project, which began in 2001, is perhaps unique in England, and the results have been spectacular. In what has become a glorious “mess”, the animals live out in the open all year round and give birth unassisted by humans. Formerly common plants – but also rare ones – have returned in profusion, together with insects, bats and other organisms. Scrubland, wetland and other habitats are gradually rewiring themselves as herbicides and pesticides disappear. The increase in the variety and abundance of birds has been particularly astonishing. Even nightingales and turtle doves, whose numbers have crashed nationwide, are returning.

You can visit Knepp Wildland. They offer safaris and camping.

<https://knepp.co.uk/home>

March RECIPE – Baked goat's cheese and rhubarb tart



Ingredients

- 320 g ready rolled puff pastry
- 1 medium egg, beaten
- 150 g white breadcrumbs
- 1tbsp freshly chopped thyme, and a few sprigs
- 250g rhubarb
- 3 individual goats' cheese with rind (approx. 90-100 g each)
- Balsamic glaze

Method

1. Preheat the oven to 200°C/ gas 6.
2. Unroll the pastry sheet and trim off the edges, cut into 6 squares. Lay them in Yorkshire pudding tins and brush around the edges with some of the beaten egg.
3. Mix the breadcrumbs with the chopped thyme, salt and pepper and remaining egg. Divide between the pastry cases.
4. Cut the rhubarb into 5cm lengths and place on top of breadcrumb mix.
5. Cut each cheese in half and place, rind-side down. Place a few sprigs of thyme on top with a little balsamic glaze.
6. Bake for 20-25 minutes or until the cheese is golden and the pastry has puffed up.
7. Eat immediately with salad.



Georgina was very surprised when she cut open a squash in January, to find that the seeds had started to germinate

NOTICES DATES FOR YOUR DIARY

How to show in the show – Sunday 7th June, site 2, 12.30

Summer Show – Sunday 14th June on Site 2, 13.00

Autumn Show – Saturday 12th September -St Margaret's Church Hall, 15.00.

AGM – Thursday 15th October, Roehampton Cricket Club

Two events at Carshalton Community Allotments

6 Week Food Growing Courses



Starting Saturday April 25th and Saturday September 26th 2020, 10.30am-12.30pm

If you are just starting out, or would like to get some more detailed knowledge of food growing, then this course is for you. Over 6 weeks you will learn everything you need to know to confidently grow your own fruit and veg. including:

Preparing your growing area, planning what to grow, planting techniques, taking care of your plants, feeding your soil and harvesting and storing produce

Don't just take our word for it! Previous students have said:

"Patient instructor with a mix of practical and theory", " Lots of aspects covered"

"The whole course was fantastic. It was informative and well delivered"

Over the six weeks you will get hands on experience as well as theoretical knowledge and the support of an experienced tutor. This course is AQA certified, and certificates can be provided for an additional fee. If you are interested in certification, please ask for more details.

Held at Carshalton Community Allotment (Access between 33-35 Colston Avenue) SM5 2PW and the price is £80.

For booking and more information, please e-mail food@ecolocal.org.uk or visit www.ecolocal.org.uk

Bud-Grafting Fruit Trees

One day workshop on Saturday 25th July 2020, 10.30am-3.30pm, lets you learn how to propagate fruit trees by budding.

In the beautiful historic setting of The Lodge in Carshalton, you'll work with heritage apple and pear trees in our Victorian walled garden.

Led by Sarah Foss, RHS qualified tutor and experienced fruit grower, you'll learn the technical theory behind budding to propagate onto a variety of rootstock to produce upright, cordon, espalier and step-over trees.

To reinforce your lessons on the day, you'll get the opportunity to learn hands on, gaining practical skills in bud-grafting as well as detailed hand-outs to take home.

All participants of the workshop take home two rootstocks budded with heritage apple or pear varieties.

Please bring your own secateurs and pruning knives if you have them.

The course is just £55 and includes lunch. For booking and more information, please e-mail food@ecolocal.org.uk or visit www.ecolocal.org.uk

RHS Wisley

Read about the 4 new gardens being created at Wisley and aiming to be ready by next spring.

The Wellbeing Garden

The World Food Garden (below)



The Wildlife Garden

The Back to Nature Children's Garden

https://www.rhs.org.uk/advice/health-and-wellbeing/articles/wellbeing-gardens-at-wisley?utm_medium=email&utm_campaign=2020_Feb_20%20-%20Quarterly%20KIPs%20email%20wisley&utm_content=2020_Feb_20%20-%20Quarterly%20KIPs%20email%20wisley%20CID_ddb52159d6b585be31c28ce438f28681&utm_source=marketing%20newsletters&utm_term=Find%20out%20more

Look out for the date of our annual members day out to Wisley, later this year.

This is a free visit which we are allowed as associate members.

RHS CONTACTS

Committee Chair: Helen Finch.

Site 2 Allotment Secretary: Catherine Maunsell-Bower.

Site 3 Joint Allotment Secretaries: Vivian Fowler & Alison Linton

Site Manager: Charles Gilbe

Comments or questions for Chair and/or Committee via website:

rgs.sw15@gmail.com

All policies and procedures are on our website.

www.roehamptonallotments.co.uk

RGS ADDRESS AND POST BOX

Fixed to the gate at site 2,
Roehampton Garden Society
The Pleasance Allotments
The Pleasance
London SW15 5HF

The store is open on Sunday mornings between 10 -12.00 noon.

During March we will also open on Saturday mornings between 11 – 12 noon. Café, serving teas, coffee and homemade cake.

BASIC RULES FOR THE PROMOTION OF SOCIAL COHESION ON OUR ALLOTMENT SITES

- Respect the rights and belongings of other plot- holders.
- No dogs without leads.
- No unsupervised children.
- Lock the gate behind you.
- Dispose of your own rubbish.
- No structures to be erected or trees to be planted without permission of your Site Secretary.

*If you think someone is breaking the rules contact a committee member or me, Helen Finch, rather than confront another plot holder. Helen.finch2@btinternet.com
07736 422373*

SECURITY

If you see someone trespassing or causing damage on the Sites, or in an emergency phone 999 or text phone 18000.

CONSERVATION FOUNDATION TOOL SHED

Mend and re-furbish old garden tools
www.conservationfoundation.co.uk

WORKAID for old tools, equipment, haberdashery, wool.

Workaid collect old tools, sewing machines etc, repair/service them and send out containers to various developing countries.

They have various collection points around the country. You can find out more about what they do here - www.workaid.org and what items they are interested in here - <https://workaid.org/wp-content/uploads/2019/08/Accepted-Refused-Items-List-August-2019-accepted.pdf>

DISCOUNTS

Your RGS membership card will be updated once your rent has been received in March. Collect it in store.

Adrian Hall, East Sheen

On presentation of your RGS membership card you will receive 10% discount on horticultural goods that you take away with you, not on delivered items.

Neal's, Heathfield Road, SW18 3HR (opposite Wandsworth Prison)

Register for their loyalty card, as an RGS member by showing your membership card, giving your name, email address and post-code. A 7% retrospective discount on goods purchased is applied and can be

redeemed at the time of the next purchase (like a Nectar card). The amount of discount is recorded as 'points' on the card and shown on each till receipt. £5.00 worth of points is put on your card as a thank you when you register.

If you are over 50, and a loyalty card member, you will receive 10% discount on Wednesdays.

AUSTIN MOWERS

Repairs and sells reconditioned mowers and sharpens shears.

300 Garrett Lane, SW18 4EH
020 8874 4206 www.austinmowers.com

NEW DAWN GARDENS

Artan Deliallisi, one of our plot holders, offers regular or casual maintenance for gardens. He will repair or build fences, gates, sheds, paving, walls and arches.
07411 288485 artandeliallisi@gmail.com

NEXT BULLETIN

April 2020. Editor Carol Martinez.

Email stories and photos to carolmartinez@hotmail.co.uk by 6th April 2020.

Recipe suggestions always welcome.